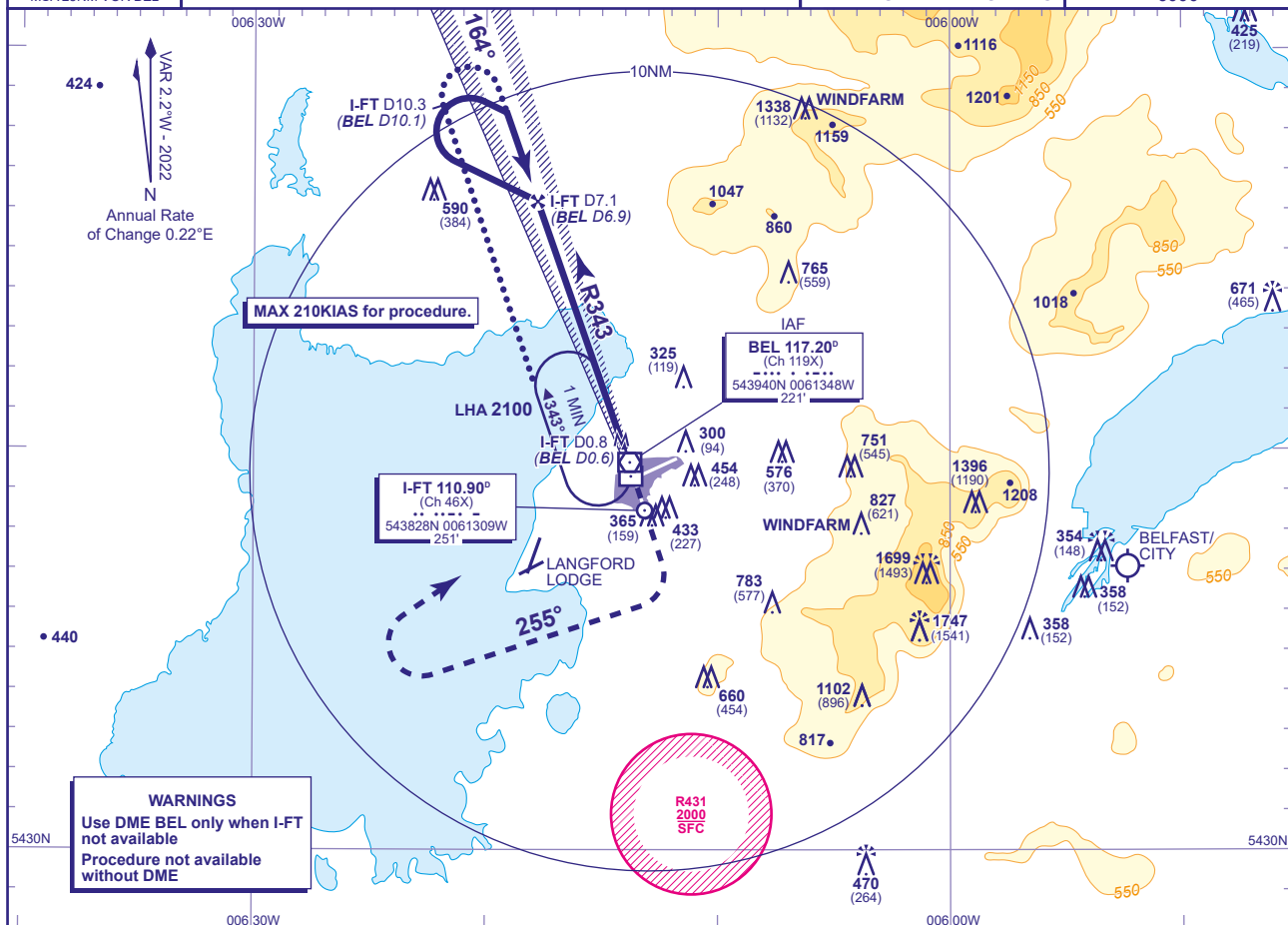
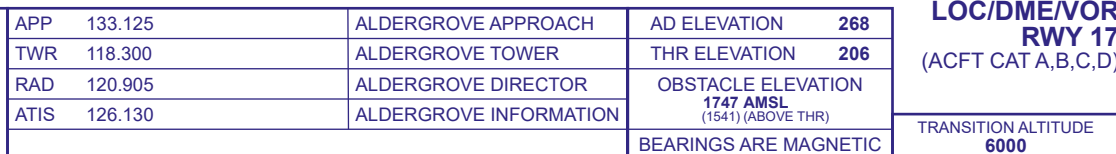
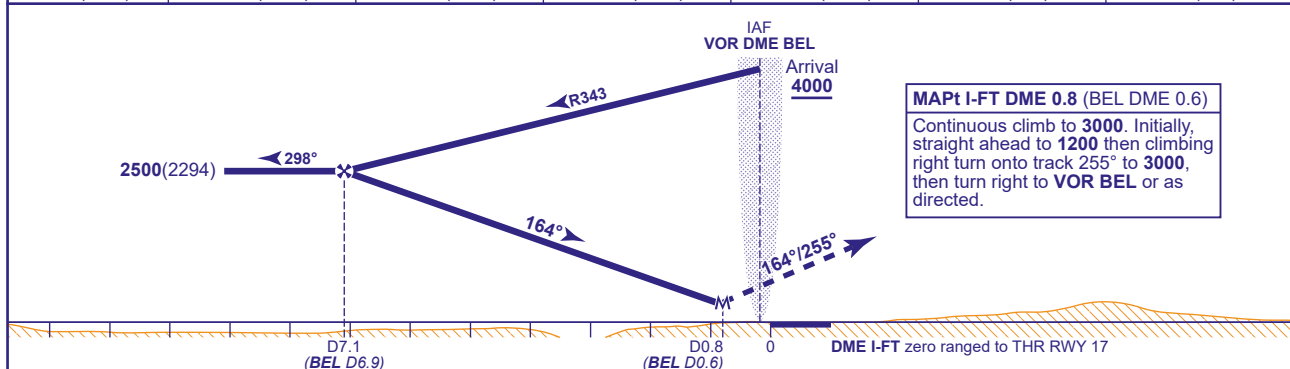


**LOC/DME/VOR
RWY 17**
(ACFT CAT A,B,C,D)



RECOMMENDED PROFILE Gradient 5.24%, 318FT/NM						
DME I-FT (BEL)	6(5.8)	5(4.8)	4(3.8)	3(2.8)	2(1.8)	1(0.8)
ALT(HGT)	2170(1964)	1850(1644)	1530(1324)	1210(1004)	890(684)	570(364)



Aircraft Category		A	B	C	D	Rate of descent	G/S KT	160	140	120	100	80
OCA (OCH)	Procedure	480(274)	480(274)	480(274)	480(274)		FT/MIN	850	740	640	530	420
VM(C)OCA (OCH AAL)	Total Area	750(482)	840(572)	1180(912)	1290(1022)							

ALTERNATIVE PROCEDURE EXTENDED HOLDING PATTERN
Overhead VOR BEL (IAF) extend outbound leg of holding pattern descending to **2500**(2294). At I-FT DME 10.3 (BEL DME 10.1) turn right to establish on LOC inbound, then continue as for main procedure.

NOTE Aircraft will normally be required to hold not lower than **3000** at VOR BEL.

CHANGE (1/25): BEL VOR F
AERO INFO DATE 29 OCT 24